



Quicklock Durabait

PLASTIC RAT BAIT STATION



- Features a superior stainless steel locking mechanism for consistent secure operation
- Hinged end opening with top key entry offers excellent servicing speed
- Product accommodates break back traps, block or loose bait

Opens & re-locks in

**UNDER
3 SECS**

using the new
Versa key!



RatPak
Engineering Ltd

 **MADE IN
BRITAIN**

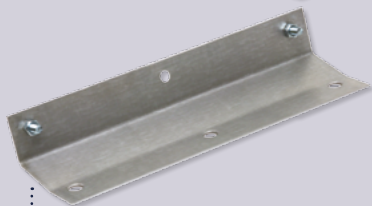


www.ratpak.co.uk T : + 44 (0)1522 686070 E : sales@ratpak.co.uk

Rat Pak Engineering Ltd, Moor Lane, Thorpe on the Hill, Lincoln, Lincolnshire, LN6 9BW UK



Available in black & green



Wall fixing bracket



Ground stake



Check in under 3 seconds!

The Station can either be fixed direct to the floor through holes in the base, secured direct to a wall using a fixing bracket or secured with a ground stake.

Quicklock Durabait uses the new Versa Key which will operate any Quicklock product (Quicklock Ultra steel rat bait station, Quicklock Durabait plastic rat bait station & Quicklock Microbait plastic mouse bait station).



- Available in black or green
- Hinged lid
- Can be checked in under 3 seconds
- Versa key fits all Quicklock products
- Measures approx. 280 x 200 x 116mm LxWxH
- Weighs approx. 0.7kg
- Supplied in Cases of 8 complete with 1 Versa key
- Made in the UK
- Also available printed with your company details



RatPak
Engineering Ltd

 **MADE IN
BRITAIN**



www.ratpak.co.uk T : + 44 (0)1522 686070 E : sales@ratpak.co.uk

Rat Pak Engineering Ltd, Moor Lane, Thorpe on the Hill, Lincoln, Lincolnshire, LN6 9BW UK